

Comprehensive Skin Cancer Center - Receipt Area

600 Morrison Rd

Gahanna, Ohio 43230

| | | |
|-----------|---------------------|--------------------|
| Architect | Casework Contractor | General Contractor |
| | | |

| | |
|----------------|----------------|
| Approval Stamp | Approval Stamp |
| | |

| | |
|----------------------------------|--|
| <p><i>General Contractor</i></p> | <p style="text-align: center;"><i>Date</i></p> |
|----------------------------------|--|

ADA requirements note that these submittals only reflect and interpret casework that has been designed of the architectural drawings for this project. They do not in any way represent a compliance with ADA requirements for dimensions, height, clearance, access, sinks, fixtures, hardware or other items not mentioned. Proposed manufactures do offer options that allow compliance, but our scope of work does not interpret the architect's intents compliance of casework or for overall design and compliance.

| | |
|---|--|
| <p><i>Drawn By:</i> ACB</p> | <p><i>Date:</i> 06-07-2010</p> |
| <p><i>Page:</i> C1</p> | |

Note:

1. All countertops (unless otherwise noted on elevations) shall be provided by Specialty Service Cabinetry, Inc.
2. All casework dimensions will be verified for and conditions that would require size changes or for any items that interfere with the casework as drawn in or elevations. All changes and dimensions due to field dimensions will be incorporated into "as-built" drawings, cabinet sizes will change at our discretion.
3. The following items shall be by others (unless noted otherwise)
 - a. Vinyl Base
 - b. Sinks
 - c. Sink Fixtures
 - d. Electrical Fixtures
 - e. Light Fixtures
 - f. Gas or Air Fixtures
 - g. Apparatus Assemblies
 - h.
 - i.
4. See submittals for details on all mechanical, electrical and plumbing final connections to be by others and coordinated with the individual trades, all sinks by others unless otherwise noted.
5. Countertop with finished ends are indicated by:
 - f. NFE or Blank = No Finished End
 - k. FRE = Finished Right End
 - l. FLE = Finished Left End
 - m. FBE = Finished Both Ends
6. Cabinets with finished ends are indicated by:
 - n. FE = Finished End
 7. FV = Field Verify
8. Equipment shown with dashed lines is for reference only. They are not intended to be show installation locations. Please contact Specialty Service Cabinetry, Inc for specific items and locations. The dealer shall be responsible for all clearances.
9. Items drawn and detailed are drawn as reference only. For complete description of inclusions and exclusions see bid scope work.

Printes Issued:

Date: Reason Issued: By: Checked By:

Project Information:

Tentative delivery currently is set for the week of:

Please note information required to order material is due by the following date:

Please note all field checks shall be submitted by the following date:

Project Notes:

Specialty Services Cabinetry, Inc

1382 Ohlen Ave, Columbus, OH 43211
Phone: 614.421.1599
Fax: 614.421.1616

Project:
Comprehensive Skin Cancer
Center - Recpt Area

Revisions:

| | |
|-----------|------------|
| Drawn By: | ACB |
| Date: | 06-07-2010 |
| | |
| | |

Page:

C2

- Carcass Construction
 - 3/8" particle board with VGS high pressure plastic laminate exterior surfaces and melamine interior surfaces
- Base Cabinets
 - Sides, rails and bottoms to be 3/8" melamine cover particle board. Glued, stapled and screwed together. Back panels to be 1/2" melamine covered particle board applied with glue, staples and screws. Cabinet bases to be 3/8" particle board with center supports and to be shipped loose. Exterior exposed edges to be edged with matching 0.018" PVC.
- Wall Cabinets
 - Sides and bottoms to be 3/8" melamine cover particle board. Glued, stapled and screwed together. Back panels to be 1/2" melamine covered particle board applied with glue, staples and screws. Exterior exposed edges to be edged with matching 0.018" PVC.
- Adjustable Shelves
 - Shelves to be 3/8" melamine cover particle board. Shelves to be mounted on clear plastic shelf clips set into 5mm system holes at 32mm apart. Front edge of shelf to be covered with 1mm PVC matching edge tape.
- Door and Drawer Fronts
 - Flush overlay construction with VDS high pressure plastic laminate in exterior face and 0.018" PVC on exposed edges. Interior surface to be melamine
- Drawers
 - Drawer box sides, front, bottom and back to be 1/2" melamine covered particle board.
- Hinges
 - 120 degree full overlay euro
- Drawer Slides
 - 75lb rated 3/4 extension
- Handles
 - Bowed handle, stainless steel, M4, center to center 96mm (Hafele 115.90.001 or equal)
- Locks
 - Chrome National Tubler Lock
- Plain Countertops
 - 3/4" particle board with hgs high pressure plastic laminate exterior surfaces. buildup on front of countertop to be 1 1/2" unless otherwise specified. back and side splashes to be made of 3/4" particle board unless otherwise specified w/ hgs high pressure plastic laminate on all exposed surfaces. see details for back splash height. where countertop has apron: apron to made of 3/4" particle board with hgs high pressure plastic laminate on all exposed areas, and frame to be made of 2 layers of 3/4" shop grade plywood for support

| Material Color | Material Application |
|----------------|----------------------|
| PL1 | Work Top |
| PL2 | Diwall Exterior |
| | |
| | |
| | |
| | |
| | |

Specialty Services Cabinetry, Inc

1382 Ohlen Ave, Columbus, OH 43211
 Phone: 614.421.1599
 Fax: 614.421.1616

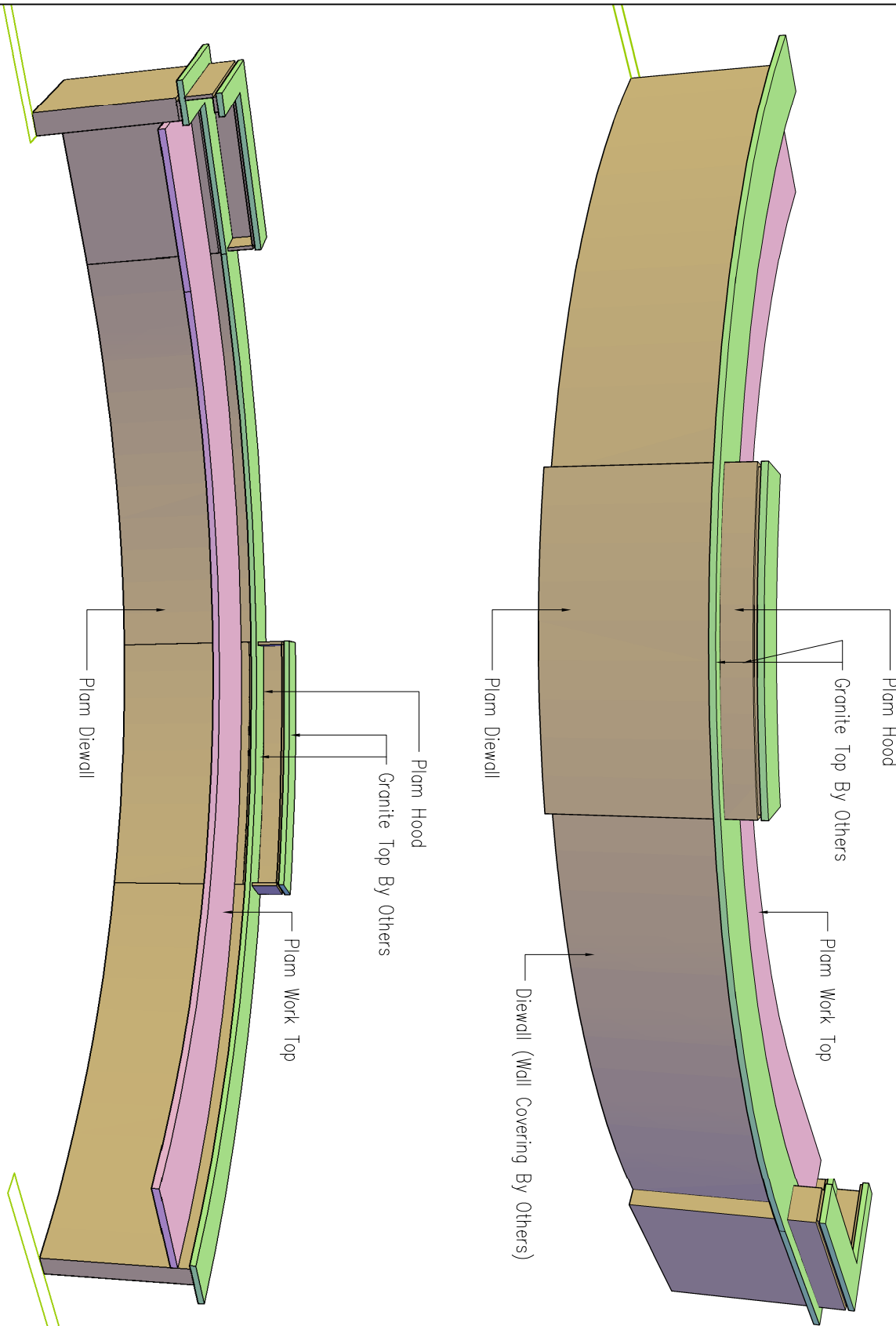
Project:
 Comprehensive Skin Cancer
 Center - Recpt Area

Revisions:

Drawn By: ACB
 Date: 06-07-2010

Page:





See Architects Drawings for Room Locations

Project:
*Comprehensive Skin Cancer
 Center - Recpt Area*

Revisions:

Drawn By: **ACB**

Date: **06-07-2010**

Scale: *See Drawing*

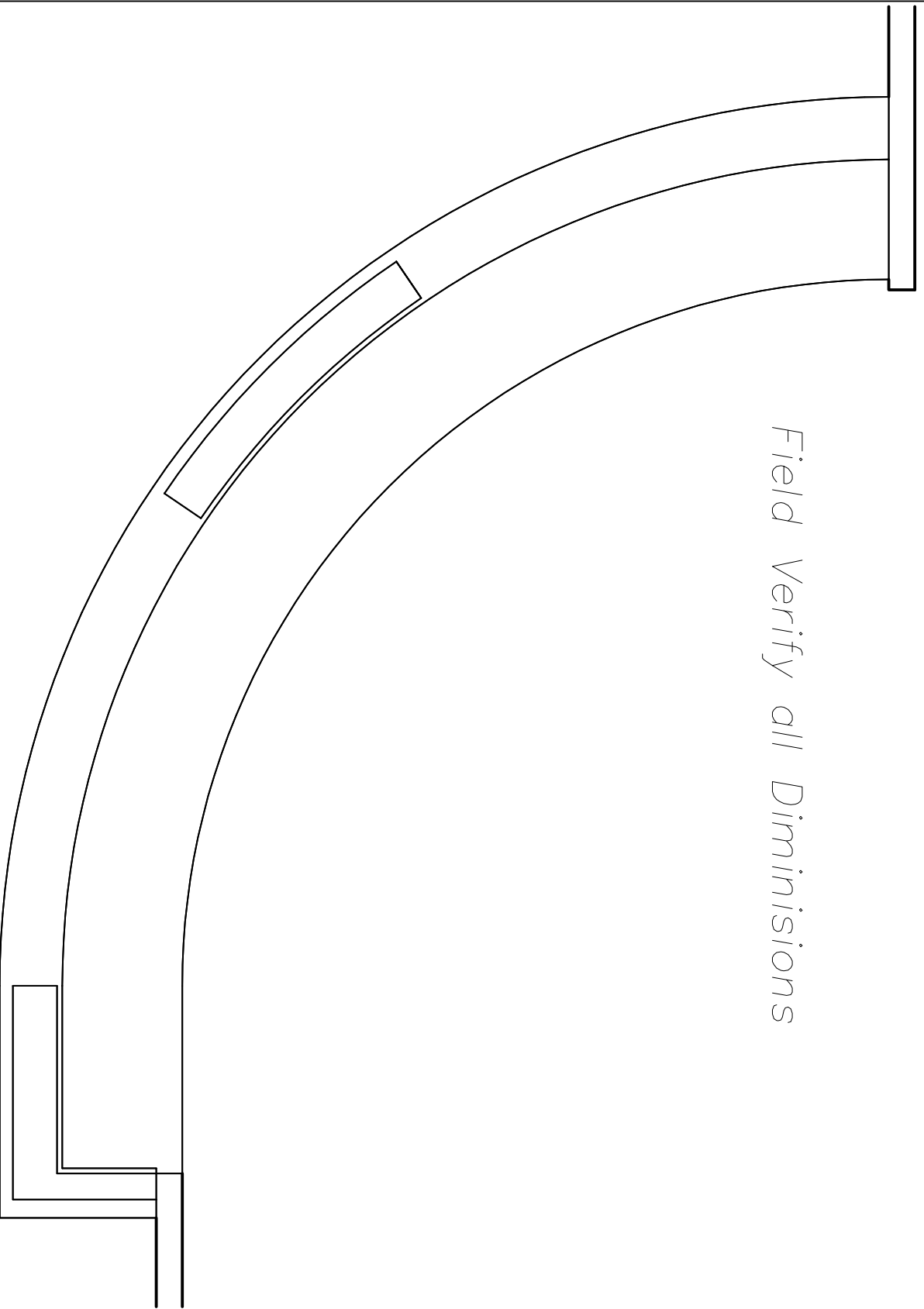
Elev: *See Drawing*

Room No: *See Drawing*

Page:

A1

Field Verify all Diminisions



See Architects Drawings for Room Locations

Project:
*Comprehensive Skin Cancer
Center - Recpt Area*

Revisions:

Drawn By: *ACB*

Date: *06-07-2010*

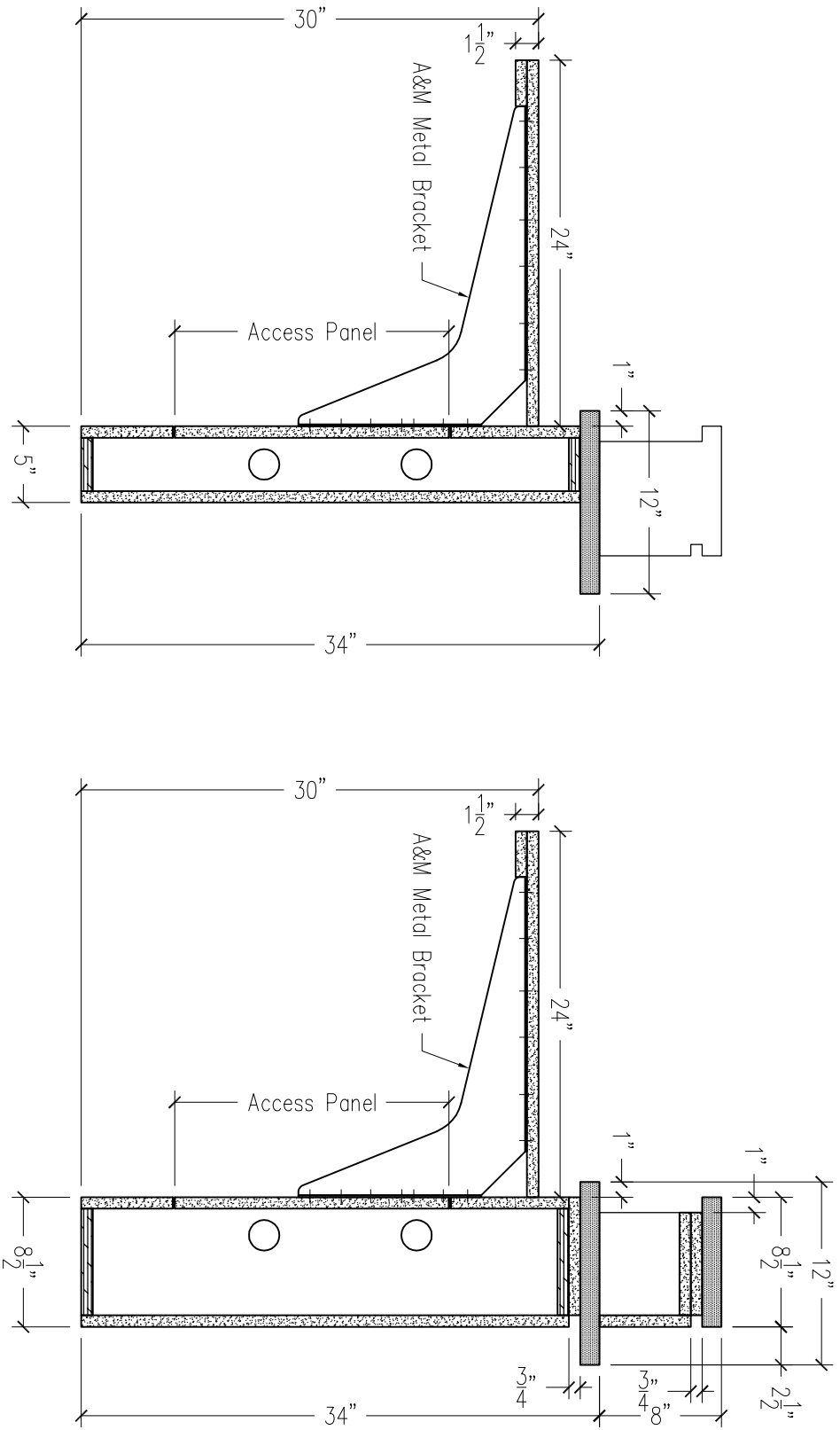
Scale: *See Drawing*

Elev: *See Drawing*

Room No: *See Drawing*

Page:

A2

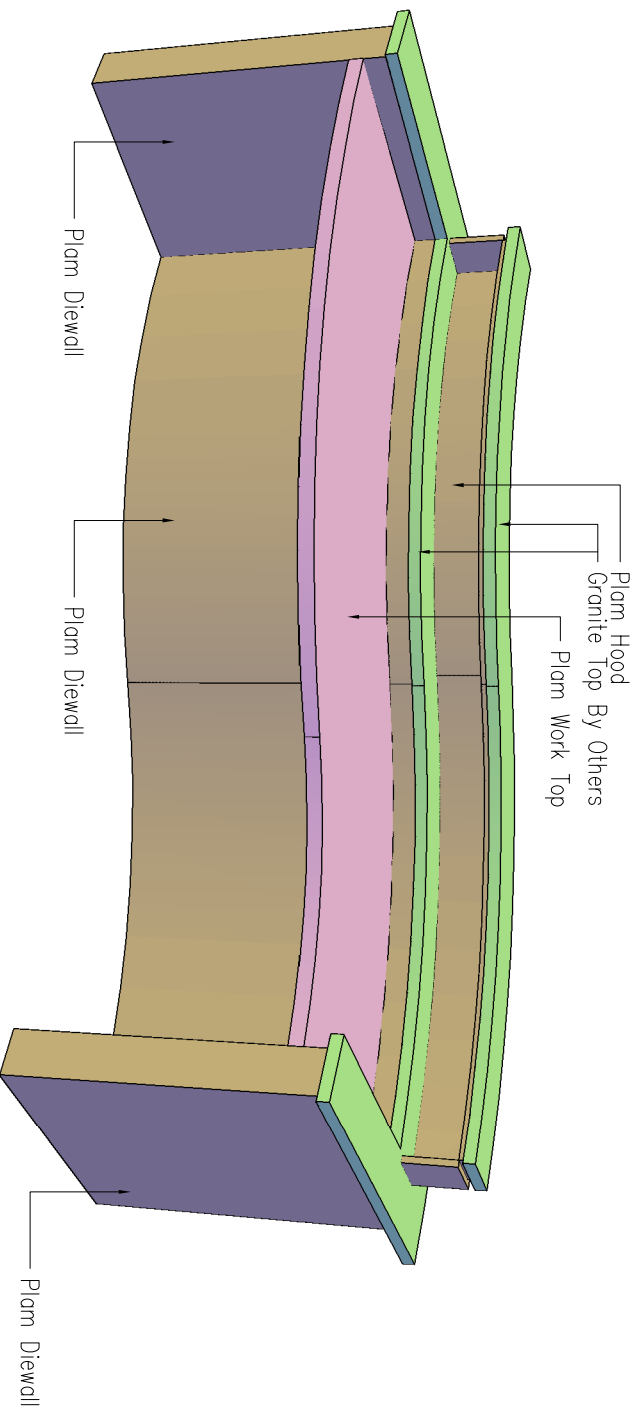
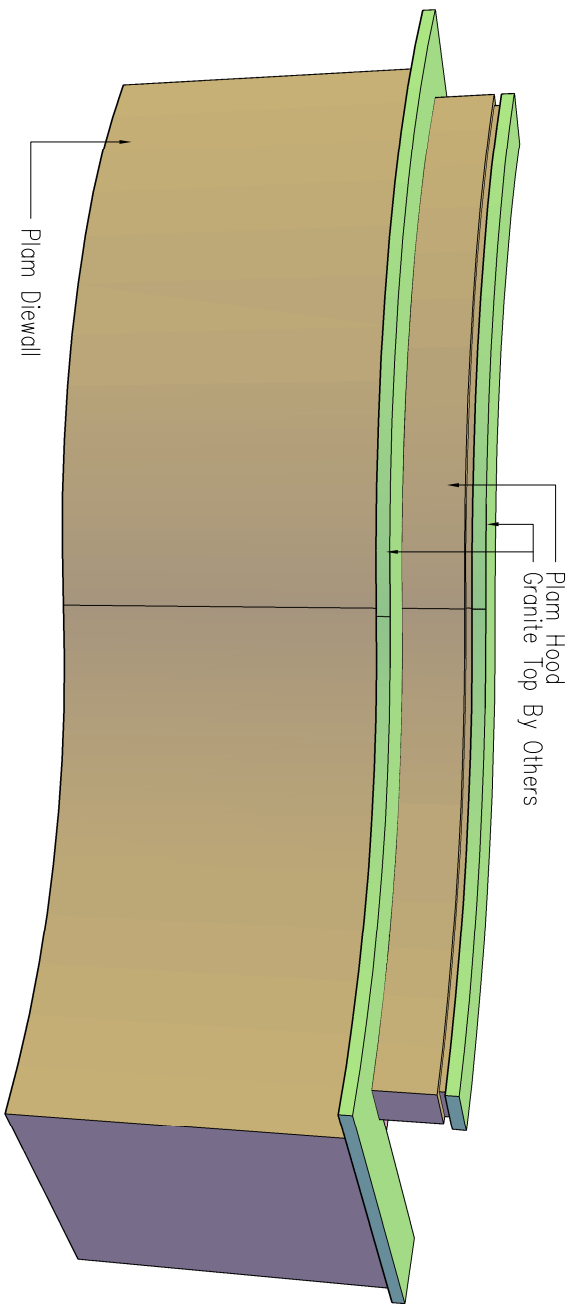


See Architects Drawings for Room Locations

Project:
 Comprehensive Skin Cancer
 Center - Recpt Area

| | |
|------------|-------------|
| Revisions: | |
| Drawn By: | ACB |
| Date: | 06-07-2010 |
| Scale: | See Drawing |
| Elev: | See Drawing |
| Room No: | See Drawing |
| Page: | |

A3



See Architects Drawings for Room Locations

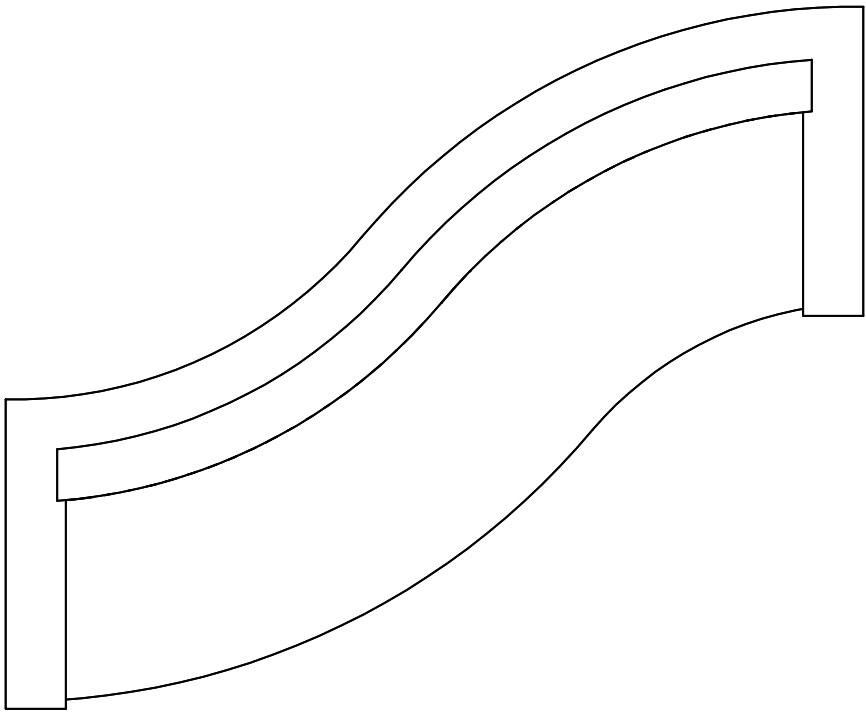
Project:
Comprehensive Skin Cancer
Center - Recpt Area

Revisions:

Drawn By: ACB
Date: 06-07-2010
Scale: See Drawing
Elev: See Drawing
Room No: See Drawing
Page:

A4

Field Verify all Diminisions



See Architects Drawings for Room Locations

Project:
*Comprehensive Skin Cancer
Center - Recpt Area*

Revisions:

Drawn By: *ACB*

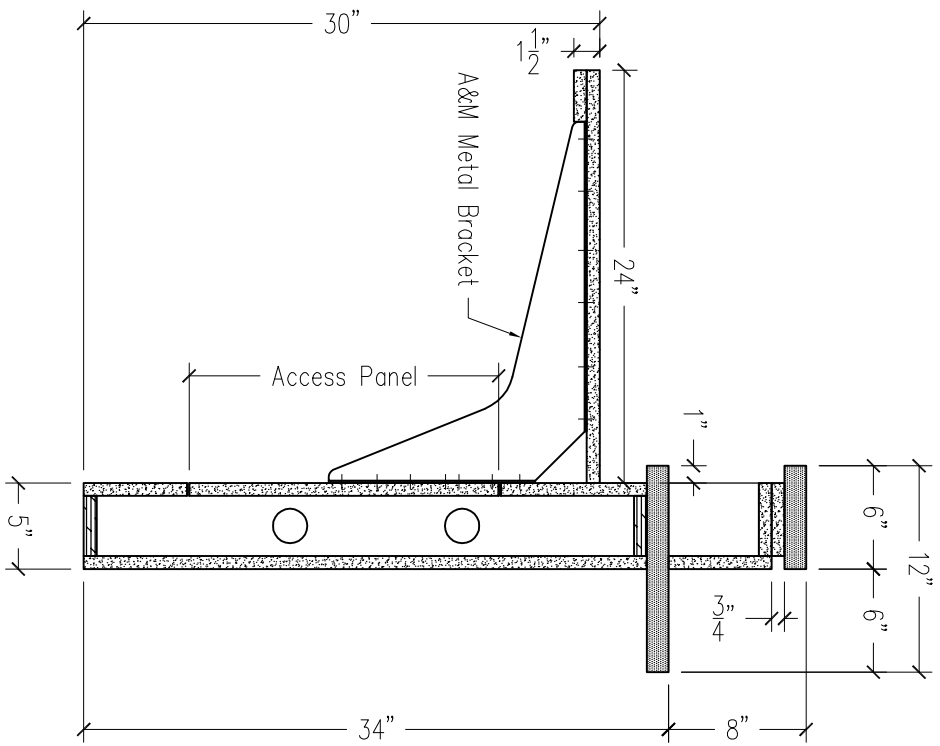
Date: *06-07-2010*

Scale: *See Drawing*

Elev: *See Drawing*

Room No: *See Drawing*

Page:



See Architects Drawings for Room Locations

Project: Comprehensive Skin Cancer Center - Recpt Area

| |
|----------------------|
| Revisions: |
| Drawn By: ACB |
| Date: 06-07-2010 |
| Scale: See Drawing |
| Elev: See Drawing |
| Room No: See Drawing |
| Page: |